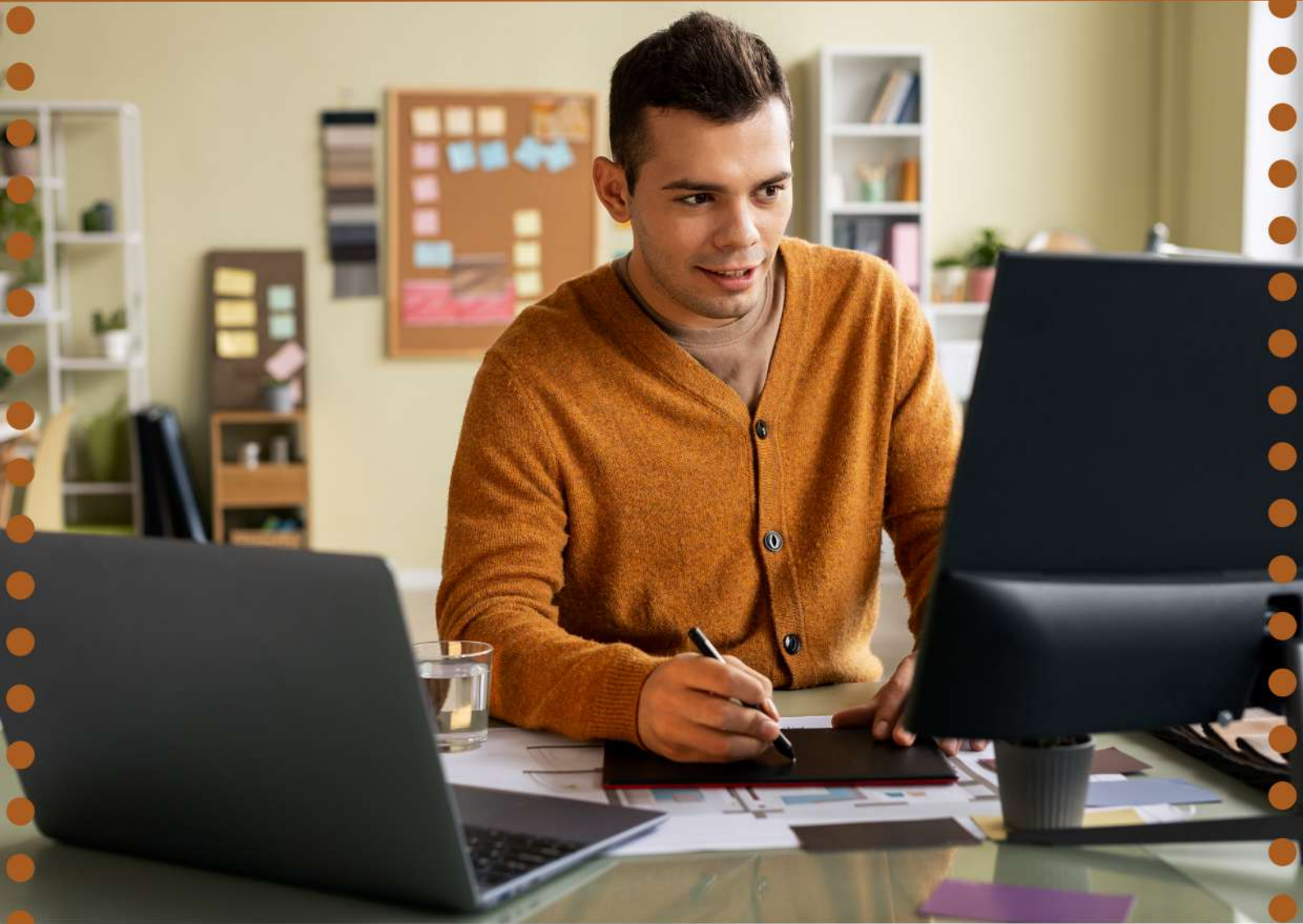
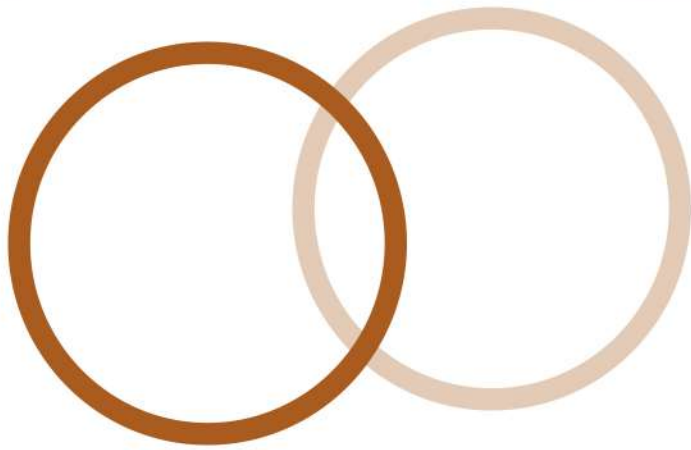


Enterprise storage for mainframe



Online Course



ZETLAN TECHNOLOGIES
www.zetlantech.com

Enterprise storage for mainframe

Course Modules

1. VSP 5000 overview

- Describe the VSP Enterprise architecture.
- Describe the VSP Enterprise front-end and back-end.

2. Mainframe storage provisioning

- VSP Enterprise addressing scheme in a mainframe environment.
- Describe the VSP Enterprise volume management and operations.
- Describe Hitachi Dynamic Provisioning concepts and principles.

3. Hitachi Storage Navigator

- Describe how to use Storage Navigator to create & expand LDEVs.
- Use Storage Navigator to create & manage Hitachi Dynamic
- How to use Storage Navigator to config Parallel Access Volume .

4. Hitachi ShadowImage

- Describe Hitachi ShadowImage concepts and principles.
- Describe how to configure ShadowImage with Storage Navigator.
- How to use Peer-to-Peer Remote Copy (PPRC) and ICKDSF



Enterprise storage for mainframe

For Enquiry: +91 8680961847

5. Hitachi TrueCopy

- Describe Hitachi TrueCopy concepts and principles.
- Describe how to configure TrueCopy with Storage Navigator.
- Describe how to use Peer-to-Peer Remote Copy (PPRC) & ICKDSF

6. Hitachi Universal Replicator

- Describe Hitachi Universal Replicator (HUR) concepts & principles.
- Describe Hitachi Universal Replicator (HUR) journals concepts.
- How to use Storage Navigator to configure remote connections
- Describe how to use Storage Navigator to manage Hitachi

7. Hitachi Business Continuity Manager

- Business Continuity Manager (BCM) concepts & principles.
- Describe Business Continuity Manager (BCM) configurations.
- Describe Business Continuity Manager (BCM) copy groups.

Free Advice: +91 9600579474

www.zetlantech.com



**LEARN
REMOTELY!!**

**The efficiency of online learning
in terms of time management,
flexibility, and the ability
to access resources anytime,
anywhere can be compelling.**



ZETLAN TECHNOLOGIES
www.zetlantech.com

**For contact: +91 8680961847
+91 9600579474**

